

AMERICAN

art COLLECTOR

PREVIEWS OF WORKS FOR SALE AT
UPCOMING SHOWS COAST TO COAST

APRIL 2012



DISPLAY UNTIL 4/26/12

\$6.95



0 74470 02541 2 04

UPCOMING SHOW

Up to 40 works

June 30-July 1, 2012

Tanya Ragir Studio

3587 Ocean View Avenue

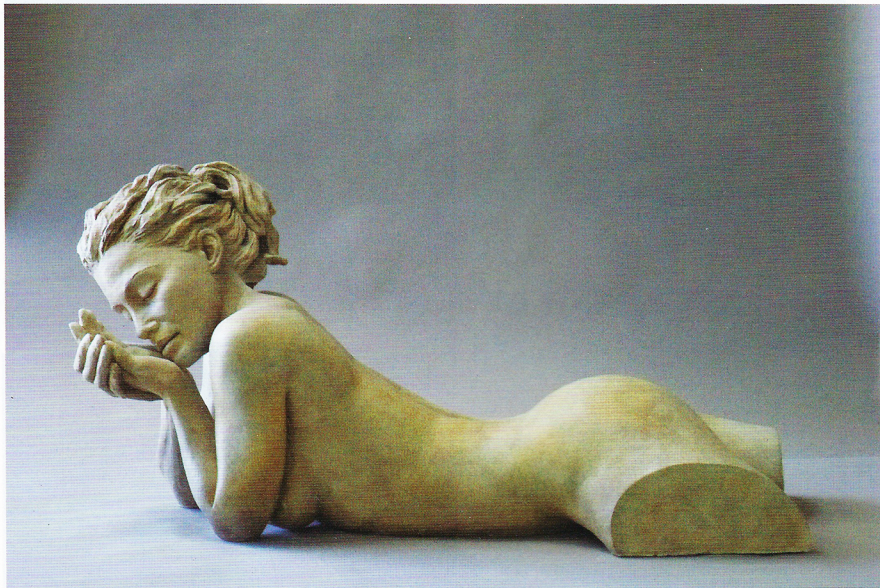
Los Angeles, CA 90066

(310) 390-5919

• SHOW LOCATION LOS ANGELES, CA

TANYA RAGIR

Sacred forms



ANOTHER COUNTRY, 18 x 35 x 12"

Tanya Ragir's new life-size sculpture in cast stone, titled *Doubt Kills the Warrior*, will debut in April at the California Art Club's annual *Gold Medal Exhibition*. The work is very important to Ragir as it came about during a transitional time in her life and work.

"My goal as an artist is to integrate my life experience in my work and to keep taking risks personally and professionally," says Ragir. "The model for this piece is someone I have known and worked with for 15 years and the context of the piece was moving through a crossroads and letting go of what's behind with a sense of

expansion and vulnerability."

Ragir is unique as a sculptor as she can work classically with the figure and then, at times, zoom in and become more abstract as she focuses on one solitary detail of the form.


"I started falling in love with the details as I was sculpting the figurative work," says Ragir. "There is a way in which a fold of the body comes from an unseen source and then returns to this invisible interior that reminds me of the landscape, which is ultimately feminine as well."

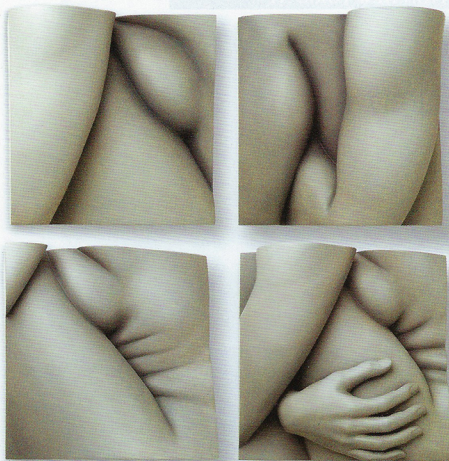
This style of work is represented in pieces like *Progression of Four*, where Ragir takes an

image of the female body and then continues to zoom into it until what is left are abstracted shapes focusing on only one element of the original image.

"I can take an element of any one of the pieces I sculpt and then go deep into an interior, change the scale and find a whole new piece," says Ragir. "The more it zooms in, the more it falls apart as a figure and becomes completely abstract." •

For a direct link to the
exhibiting gallery go to


www.americanartcollector.com



PROGRESSION OF FOUR, 10 X 10 X 7" (EACH PIECE)



DOUBT KILLS THE WARRIOR, 83 X 96"



TOTEM III, 10 X 4 X 4"